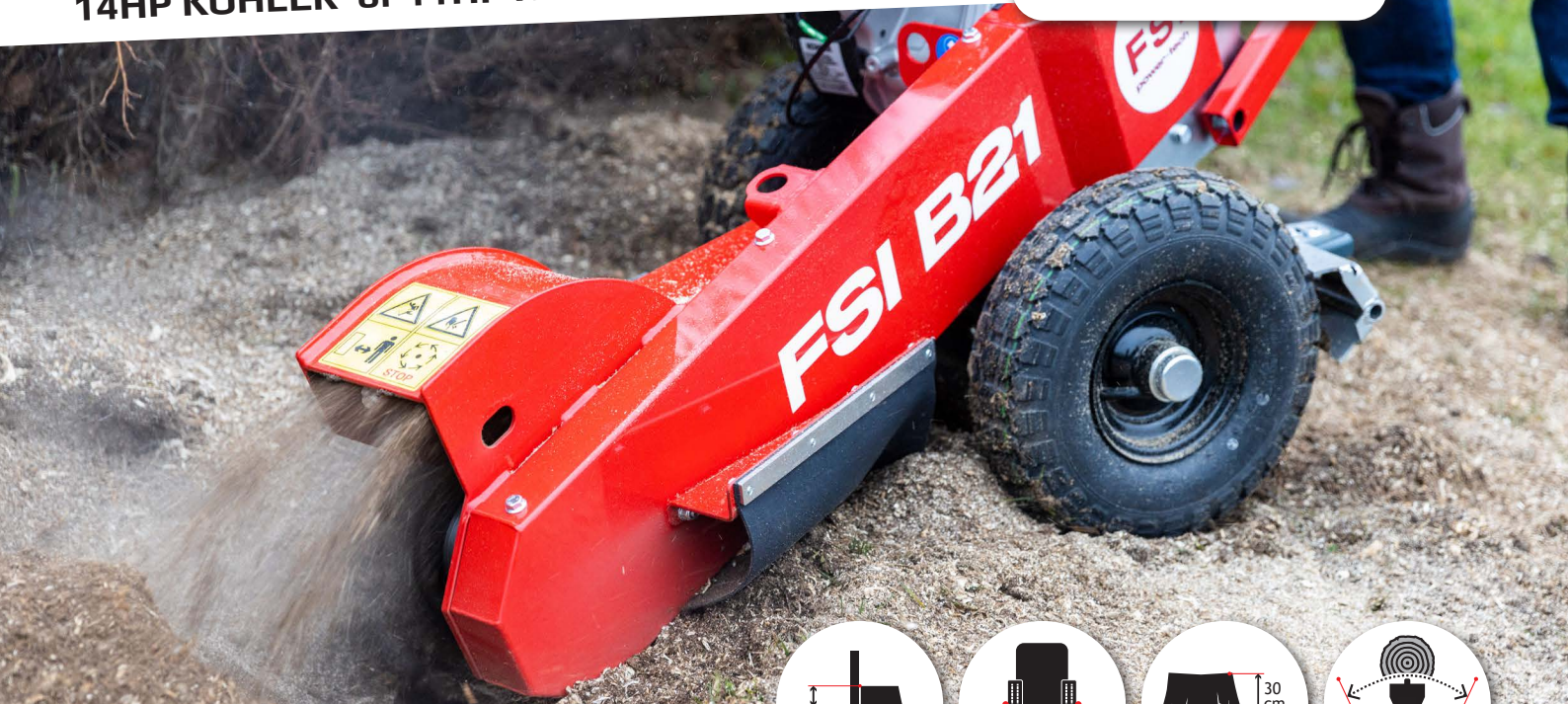


# FSI B21



14HP KOHLER or 11HP HONDA PETROL ENGINE



## EFFORTLESS AND SAFE TRAVEL

Easily pull your stump cutter backwards on ramps, up steps, or in terrain with the assistance of the **hill hold brake system**.

When activated, the system will block any forward motion of the wheels allowing for **full control and increased safety**.



## NO DAILY MAINTENANCE

With **simple V-belt tensioning** and a **closed bearing housing**, pre-greased from factory for more than 1000 hours of normal operation, daily maintenance is history.

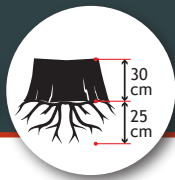
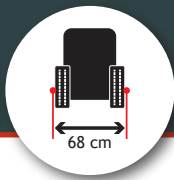


## LOW FATIGUE

Vibration damped and **height-adjustable handle** for improved ergonomics. **Turntable design** with a well-balanced pivot point makes cutting easy on the operator



**NARROW ACCESS**



## FS1 B21

**NEW: Powerful pedestrian stump grinder with remarkable new features**



- **Hill hold system (Pat. pending)** - unique system developed by FS1 to increase safety and give full control when moving on ramps, up steps or in terrain.
- **Closed bearing housing** - no daily maintenance is required as the cutter wheel bearing is pre-greased from factory for more than 1000 hours of normal operation.
- **Turntable design** - a well-balanced pivot point and two individual wheel brakes makes cutting easy on the operator
- **Improve ergonomics** - position the vibration reduced operator handle as you prefer with many adjustment options
- **Safety bar** - disengaging the cutter wheel upon release
- V-belt drive for optimal power transmission
- Easily accessible lashing and lifting points
- Centrifugal clutch
- Manual brake for each wheel
- Large and easy-to-operate wheels
- Tool set

Engine	
Engine size / type	10.5 kW / 14 HP Kohler CH440 8.2 kW / 11.1 HP Honda GX390
Fuel type	Petrol
Tank capacity	Kohler: 7 l / Honda: 6.1 l
Cutting Head	
Diameter	386 mm
Tooth system	FS1 21 - 3 x rotatable
No. of teeth	8
Clutch	Centrifugal
Cutter wheel drive	V-belt
Sweep system	Manual
Cutting range	
Above ground level	30 cm
Below ground level	25 cm
Sweep width	87 cm
Max cutting depth	2.4 cm per sweep
Operation	
Control panel	In the handle

Drive system	
Ground drive	Manual
Wheels	Ø365 x 100, 6 ply
Brake	Hill hold system - 2 x Individual
Dimension	
Length	1580 mm
Width	680 mm
Height	1230 mm
Weight	130 kg (Kohler) - 125 kg (Honda)
Optionals	
	Hour meter
	Drawbar for ball hitch. Max speed 10 km/h
	Document tube
	Special color - (RAL color)